

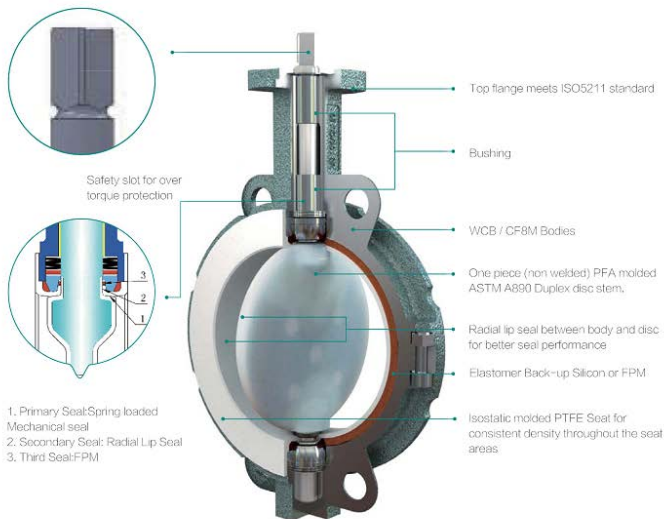
RKSfluid®

Proven Technology - Superior Features
Legendary Value

Griffin Series Wafer/Lug

NPS2-NPS12(DN50-DN300)





1. Primary Seat: Spring loaded Mechanical seal
2. Secondary Seal: Radial Lip Seal
3. Third Seal: FPM

Cv Value

Size	20°	30°	40°	50°	60°	70°	80°	90°
NPS2/DN50	4	10	21	38	56	90	108	115
NPS2½/DN65	6	18	32	58	98	165	210	223
NPS3/DN80	10	25	52	95	172	278	315	335
NPS4/DN100	14	38	87	150	265	450	580	620
NPS5/DN125	28	55	145	250	430	755	935	1020
NPS6/DN150	50	98	230	382	645	1120	1380	1490
NPS8/DN200	75	165	290	530	820	1650	2530	2780
NPS10/DN250	145	280	465	830	1250	2385	4150	4580
NPS12/DN300	215	405	720	1250	1935	3652	6130	6720

Valve Torques

Size	NPS2/DN50	NPS2½/DN65	NPS3/DN80	NPS4/DN100	NPS5/DN125	NPS6/DN150	NPS8/DN200	NPS10/DN250	NPS12/DN300
N.m	18	22	39	53	74	123	166	280	368
Lb/in	155	194	348	465	658	1084	1471	2478	3252

Torques are for reference only. RKSfluid reserves the right to change product torques without notice.

Pressure Ratings

BIDIRECTIONAL BUBBLE-TIGHT SHUT OFF & DEAD-END SERVICE

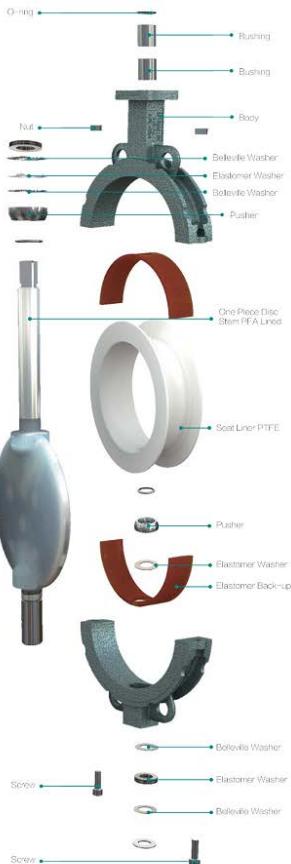
NPS2-NPS12(DN50-DN300)

150psi(10.3Bar)

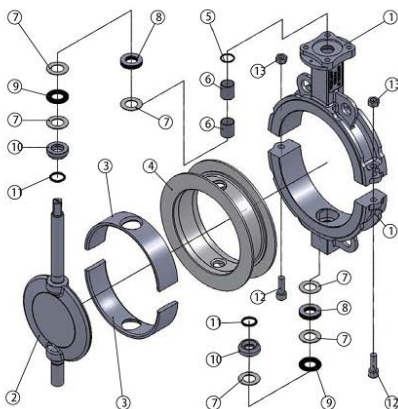


Technical Parameters

Size	NPS2-NPS12(DN50-DN300)
Face to Face	EN 558 Series 20 DIN 3202 T3 K1 API 609 T1 ISO 5752 Series 20 GB/T 12221
Connection Flanges	BS EN 1092 Table 8 & Table 9 DIN 2501 PN10/16 ANSI B16.5 Class 150 AWWA C207 Class B & Class D MSS SP-44 Table Class 150, 285PSI AS 2129 Table D & Table E (DN100-DN300) ISO 7005 PN10/16
Top Flanges	ISO 5211
Seal Grade	ISO 5208 Table 4 RATE A API 598 Table 6
Working Temperature	-40°C--+200°C related to working pressure
Working Pressure	Max 10 bar (16 bar as per requirements)
Vacancy	Low Vacancy (101325-0.133Pa)
Fugitive	≤ 10 ⁻⁴ mg/s · m



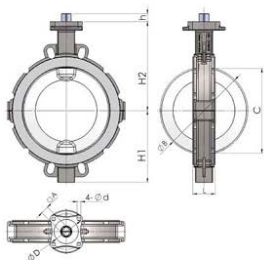
Parts and Material



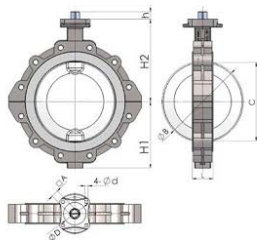
No.	Parts	Material
1	Body	WCB (Standard) CF8M, CF8 (Optional)
2	One Piece Disc Stem	1.4462/1.4469+PFA (Standard) 17-4PH+PFA CF8/CF8M/CF3/CF3M+PFA
3	Elastomer Back-Up	Viton/silicone
4	Seal	PTFE
5	O-ring	Viton/silicone
6	Bushing	Composite material
7	Washer	PTFE
8	Belleville Spring	50CrV/A
9	Elastomer Washer	Viton/silicone
10	Pusher	316L
11	O-ring	Viton
12	Bolt	SS A2-70
13	Screw	SS A2-70

Material is optional as per requirements.

Dimensions



Wafer



Lug

Size	IMPERIAL DIMENSIONS: Inches									
	L	H1	H2	h	□ A	B	C	D	d	ISO5211
NPS2	1.69	2.20	5.31	0.47	0.43	2.01	1.08	1.97	0.28	F05
NPS2½	1.81	3.35	5.91	0.47	0.43	2.72	1.99	1.97	0.28	F05
NPS3	1.81	3.74	6.30	0.63	0.55	3.27	2.70	2.76	0.35	F07
NPS4	2.05	4.13	7.09	0.63	0.55	4.06	3.50	2.76	0.35	F07
NPS5	2.20	4.92	7.68	0.63	0.55	5.00	4.49	2.76	0.35	F07
NPS6	2.20	5.71	10.04	0.63	0.55	5.98	5.57	2.76	0.35	F07
NPS8	2.36	6.69	9.45	0.83	0.75	7.99	7.64	4.02	0.47	F10
NPS10	2.68	8.07	11.81	0.94	0.87	10.00	9.65	4.92	0.51	F12
NPS12	3.07	9.84	12.20	1.14	1.06	12.01	11.61	4.92	0.51	F12

Size	METRIC DIMENSIONS: Millimeters									
	L	H1	H2	h	□ A	B	C	D	d	ISO5211
DN50	43.00	56.00	135.00	12.00	11.00	51.00	27.50	50.00	7.00	F05
DN65	46.00	85.00	150.00	12.00	11.00	69.00	50.50	50.00	7.00	F05
DN80	46.00	95.00	160.00	16.00	14.00	83.00	68.50	70.00	9.00	F07
DN100	52.00	105.00	180.00	16.00	14.00	103.00	89.00	70.00	9.00	F07
DN125	56.00	125.00	195.00	16.00	14.00	127.00	114.00	70.00	9.00	F07
DN150	56.00	145.00	255.00	16.00	14.00	152.00	141.50	70.00	9.00	F07
DN200	60.00	170.00	240.00	21.00	19.00	203.00	194.00	102.00	12.00	F10
DN250	68.00	205.00	300.00	24.00	22.00	254.00	245.00	125.00	13.00	F12
DN300	78.00	250.00	310.00	29.00	27.00	305.00	295.00	125.00	13.00	F12

Drawings are for reference only. RKSfluid reserves the right to change product dimensions without notice.

RKSfluid® Proven Technology—Superior Features—Legendary Value

